



INVITATION

1st COCORICO CUP

PARIS-FRANCE

F2D

20 & 21 May, 2023

Location:

**Centre Départemental de Modélisme, Chemin de la
Corneille, 94510 La Queue-en-Brie, France**

GPS : Latitude : 48.772387 | Longitude : 2.583117

Classes with world cup status: F2D

FAI License and Insurance:

A valid FAI-license and an insurance is mandatory for participating in the World cup competitions

Registration fee:

The entry fees and barbeque can be paid at the registration on the field.

- World cup classes (F2D): 35€
- Other classes (and junior): 25€

Banquet

- Adults (incl. wine) 25€
- Junior: 15€

Please use this link to submit your registration.

https://docs.google.com/forms/d/e/1FAIpQLSfcWZ652HP-PPFGiinU6nP-FXfieE5buafEGUthyYkxqb_GqQ/viewform

Protests:

All protests must be issued in writing to the Contest Director and must be accompanied by a deposit of 50 €. This fee is only returned if the protest is approved.

**Practice:**

You are welcome to practice on the flying field from Thursday to Friday. Due to noise restrictions flying is only allowed between 9.00 and 19.00.

Time schedule:

May 19 th – Friday

- Arrival and practice
- 21:00 Check in closing

May 20 th – Saturday

- 8:00 – 9:00 Check in
- 10:30 Pilot information
- 11:00 Competition
- 20:30 Banquet

May 21 th – Sunday

- 9:00 Pilot information
- 9:30 Competition
- 15:00 Finals and prize giving

Getting Here

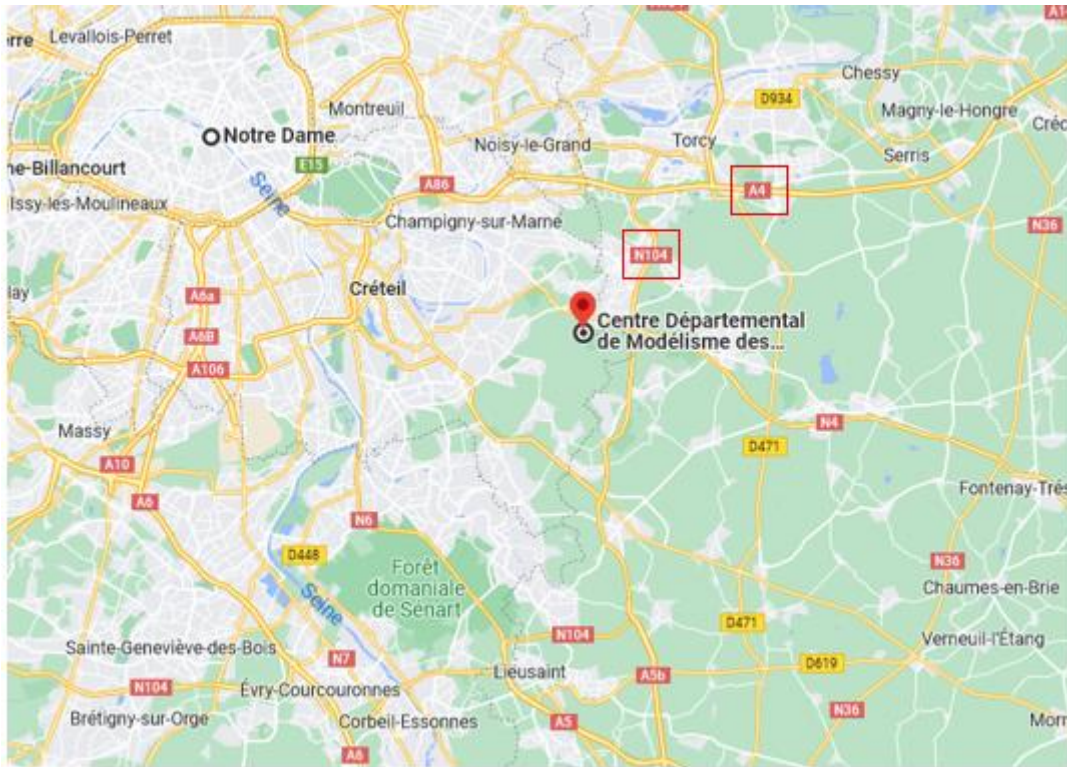
La Queue en Brie is a town with 12 000 inhabitants located from 25 km to center of Paris (Notre dame – cathedral).

There are highways directly to the city : A4 (E50), N104, N04

The closest airports are:

PARIS CHARLES DE GAULE (CDG) (45 KM)

PARIS ORLY (ORY) (27 KM)





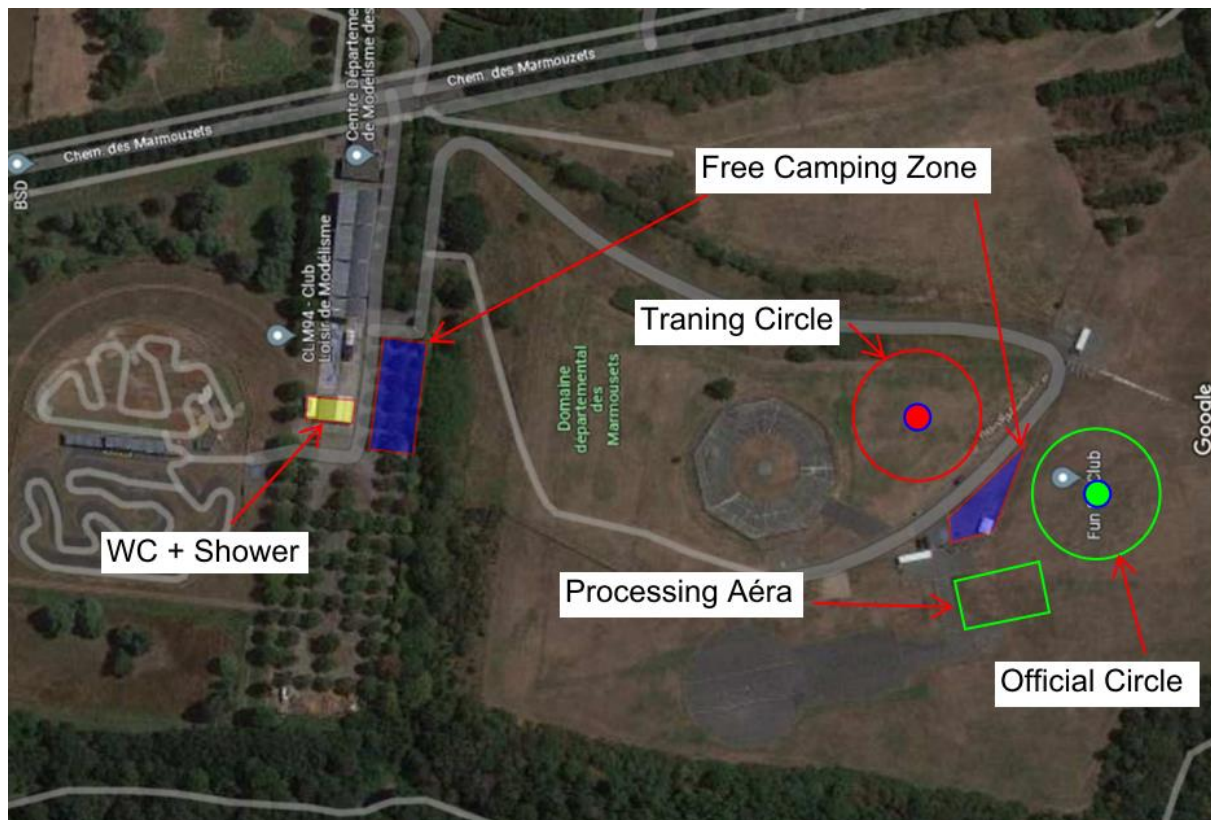
Accommodation

You are free to camp on the site. There is electricity available, toilets and even a outdoor shower. And you don't need to be a wiking – there is warm water available.

Hotels

You can have preferential rates at this hotel if you go through Anthony Rotislamov to book.

https://all.accor.com/ssr/app/ibis/hotels/77340-pontault-combault-france/ibb/index.fr.shtml?compositions=1&stayplus=false&order_hotels_by=RECOMMENDATION&snu=faIse&accessibleRooms=false&utm_term=mar&gclid=Cj0KCQjw6cKiBhD5ARIsAKXUdyaUUvSrZldT40ka4kDTFAR4HpJSkSQ0fOYZjqM_w9ktECjqz3tLnCMAArqDEALw_wcB&utm_campaign=ppc-ibb-mar-goo-fr-fr-dom_rest-mix-s&utm_medium=cpc&utm_source=google&utm_content=fr-fr-FR-V3153



Tourism

To visit Paris and see the Eiffel Tower, you can use car (1 hour) or public transports (1,50 hour) from La queue en Brie.

You can also see Mickey Mouse at Disneyland Paris Parc by car (30 min) or by public transports (1,50 hour)

